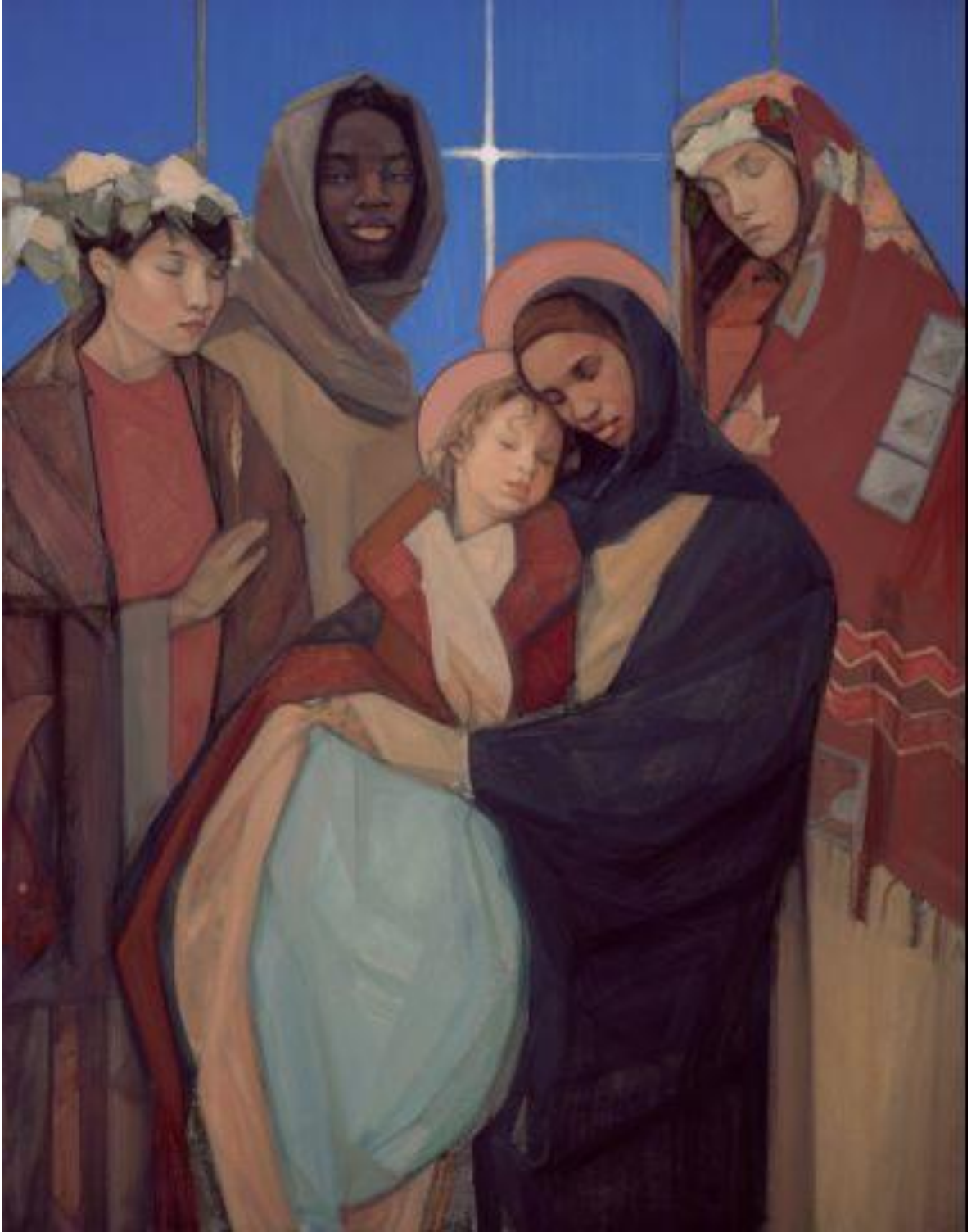




JESUS COLLEGE CHAPEL

LENT TERM 2020



Epiphany, 2003
Janet McKenzie †

REGULAR SERVICES (12th January – 13th March)

Monday–Friday	9.15am Morning Prayer (said)
Tuesday	6.30pm Choral Evensong (College Choir)
Thursday	6.30pm Choral Evensong (Chapel Choir)
Saturday	6.30pm Choral Evensong (Chapel Choir)
Sunday	10.00am Eucharist (Vocal Consort) followed by breakfast in D1 6.00pm Choral Evensong (College Choir) followed by drinks

SUNDAY EVENSONG ADDRESSES

WHAT DID EVENSONG EVER DO FOR US?

Choral Evensong, a service devised by Jesuan Archbishop Thomas Cranmer, has been a source of wonder and means of reflection for centuries. This term we ask how, regardless of religious conviction, the experience of Evensong may help to make us better, or at least better-adjusted, human beings.

January	12 th	Worship: Getting Over Yourself <i>The Dean of Chapel</i>
	19 th	Prayer: Does it Make a Difference? <i>The Reverend Canon Dr Rowan Williams</i> Canon Precentor, Peterborough Cathedral
	26 th	Psalms: Too Angry for Words <i>The Reverend Dr Jane Leach</i> Principal, Wesley House, and Fellow Commoner, JCC
February	2 nd	Lighten our Darkness: Candlemas <i>The Assistant Chaplain</i>
	9 th	Evensong for Non-Believers <i>Dr Julian Perlmutter</i> Formerly Lecturer and Tutor, Cambridge Theological Federation
	16 th	Music, Meaning and Manipulation <i>Mark Williams</i> Informator Choristarum, Magdalen College, Oxford (JCC 2008–2016)
	23 rd	The Poetics of Sacred Space <i>The Reverend Dr Ayla Lepine</i> Assistant Curate, Hampstead Parish Church (JCC 2015–2018)
March	1 st	Alone Together <i>The Dean of Chapel</i>

SPECIAL SERVICES

- January** 10th **Choral Evensong for Old Members' Reunion** (6.00pm)
- 21st **Choral Evensong joint with Caius College Choir**, taking place at Jesus College Chapel (6.30pm)
- 28th **Choral Evensong joint with the Choir of Emmanuel School** (6.30pm)
- 28th **Compline by Candlelight**, followed by port and cocoa (9.45pm)
- February** 1st **Festal Eucharist for Candlemas with Admission and Dismissal of the Choristers** (6.30pm)
- 2nd **Festal Evensong for Candlemas** (6.00 pm)
- 7th **Choral Evensong for St Radegund** (6.15pm)
- 11th **Jazz Vespers**, followed by port and cocoa (9.45 pm)
- 19th **Choral Evensong joint with Queen's College Choir**, taking place at Queen's College Chapel (6.15pm)
- 26th **Eucharist for Ash Wednesday** (6.15pm)
- Compline by Candlelight**, followed by cocoa (9.45pm)
- March** 3rd **Choral Evensong joint with the Chamber Choir of Palmers Green High School** (6.30pm)
- 8th **A Service of Music and Readings for Lent and Passiontide** (6.00pm)
- 13th **Commemoration of Benefactors** (6.15 pm)

JOHN HUGHES ARTS FESTIVAL

Friday 7th – Sunday 9th February

This annual interdisciplinary festival brings together student creativity and initiative across the College, in memory of the Revd Dr John Hughes (1978-2014), formerly Dean of Chapel.

The theme of the festival this year is 'Evergreen'. See facebook.com/JohnHughesArtsFestival

SPECIAL EVENTS



COMPLINE BY CANDLELIGHT

Tue 28th January, Wed 26th February, 9.45pm, Chapel

A short, atmospheric service of night prayers, with chants and psalms sung by members of the College Choir.

Followed by cocoa in the Dean's rooms.

JAZZ VESPERS

Tuesday 11th February, 9.45pm, Chapel

A reflective experience to end the day, with a psalm, reading and prayers punctuated by music from a jazz trio.

Followed by cocoa and port in the Dean's rooms.



CAMBRIDGE ECO-MOSQUE TRIP

Saturday 15th February

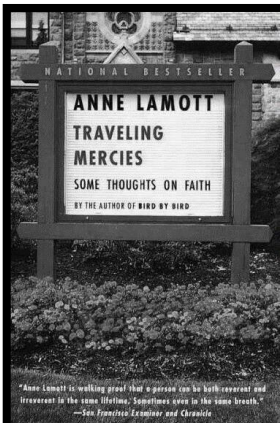
A tour of the Cambridge Central Mosque, a stunning innovation in design and sustainability. Followed by a free halal lunch nearby.

Places are limited; contact the Dean for more details.

SACRED STILLNESS

Thursdays 23rd January, 20th February, 12.15pm, Chapel

Refocus with a short guided meditation and enjoy 30 minutes of stress-busting silence. No prior experience necessary!



BOOK CLUB: TRAVELING MERCIES

Tuesdays 21st January – 10th March, 4pm, D1

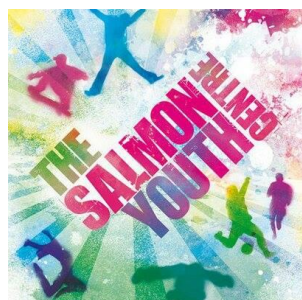
Anne Lamott's memoirs are an irreverent, irate, and doubtful journey towards growing in grace in a hard world. Join us weekly for tea and cake to talk our way through it.

Contact the Dean to get your free copy, or just turn up.

CHAPEL CHARITIES

Chapel collections this term will go to support the work of **Cambridge Women's Aid** and **A Rocha UK**. Cambridge Women's Aid provides dedicated and specialist services to women and children affected by domestic abuse. A Rocha UK is a Christian charity working for the protection and restoration of the environment through conservation, campaigning and public engagement.

SALMON YOUTH CENTRE: SUMMER PLACEMENTS



Could you spend a week in London helping to support and transform the lives of young people in inner city London? The Salmon Youth Centre in Bermondsey welcomes around 500 young people (age 6–19) every week, with clubs for arts, sports and training as well as targeted projects for looked-after children, those from abusive homes, those with learning difficulties, or at risk of homelessness or offending. DBS checks will be required; accommodation provided. For more information, contact the Dean.

BAPTISM AND CONFIRMATION

Baptism and confirmation are the ancient and well-trodden ways by which Christians recognise publicly their discovery of God's grace, and commit to living in the light of Jesus' love. If you would like to explore the Christian faith more, or may wish to consider baptism or confirmation, please contact the Assistant Chaplain.

UNIVERSITY AND COLLEGE FAITH CONTACTS

Buddhist Chaplaincy – Rachael Harris (rmh1001)

Catholic Chaplaincy (Fisher House) – Mgr Mark Langham (chaplain@fisherhouse.org.uk)

Christian Union (College group) – Callie Smith (csrs2) and Tim Smith (trs51)

Hindu Chaplaincy – Dr Vickneswaren Krishnan (chaplainvic@gmail.com)

Islamic Society (College reps) – Sulaiman Iqbal (si323) and Zahra Shaikh (zs336)

Jewish Chaplaincy – Rabbi Elazar and Alyssa Simon (elazar@mychaplaincy.co.uk)

Jews for Jesus (College group) – Dan Lederman (dl583) and Ariel Cohen (atc40)

Sikh Society – sikh@cusu.cam.ac.uk

THE CHAPEL

Jesus College Chapel has for nine centuries been a place of quiet and contemplation, and it is open to all members of the College community. The clergy are available to all members of the College – of any faith or none – as pastoral advisers; they can also offer information about other faith groups. Contact the Dean of Chapel if you are willing to read lessons, lead intercessions, or help in other ways with services in Chapel. Enquiries regarding the use of the Chapel may be directed to the Secretary to the Dean, at chapel@jesus.cam.ac.uk.



James Crockford

Dean of Chapel
Rooms: D1
(3)39433
j.crockford@jesus.cam.ac.uk

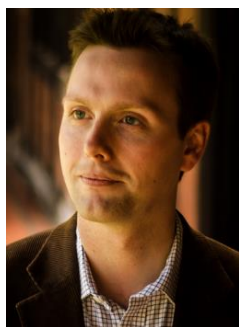


Zachary Guiliano

Assistant Chaplain
(Dean's Clerk)
z.guiliano@jesus.cam.ac.uk

THE CHOIRS

Jesus College has a long and rich tradition of church music, and is distinctive in maintaining two choirs. The College Choir, consisting mostly of students, has a female soprano line whereas the Chapel Choir admits boy trebles from around the city of Cambridge. The lower voices are common to both choirs. Enquiries regarding the choirs may be directed to Alice Kane, Choir Administrator, at a.kane@jesus.cam.ac.uk. Alternatively you may wish to visit jesuscollegechoir.com.



Richard Pinel

Director of Music
r.pinel@jesus.cam.ac.uk



[/jesuscollegechapel](https://www.facebook.com/jesuscollegechapel)
[/jesuschoircambridge](https://www.facebook.com/jesuschoircambridge)



[@jescollchoir](https://twitter.com/jescollchoir)