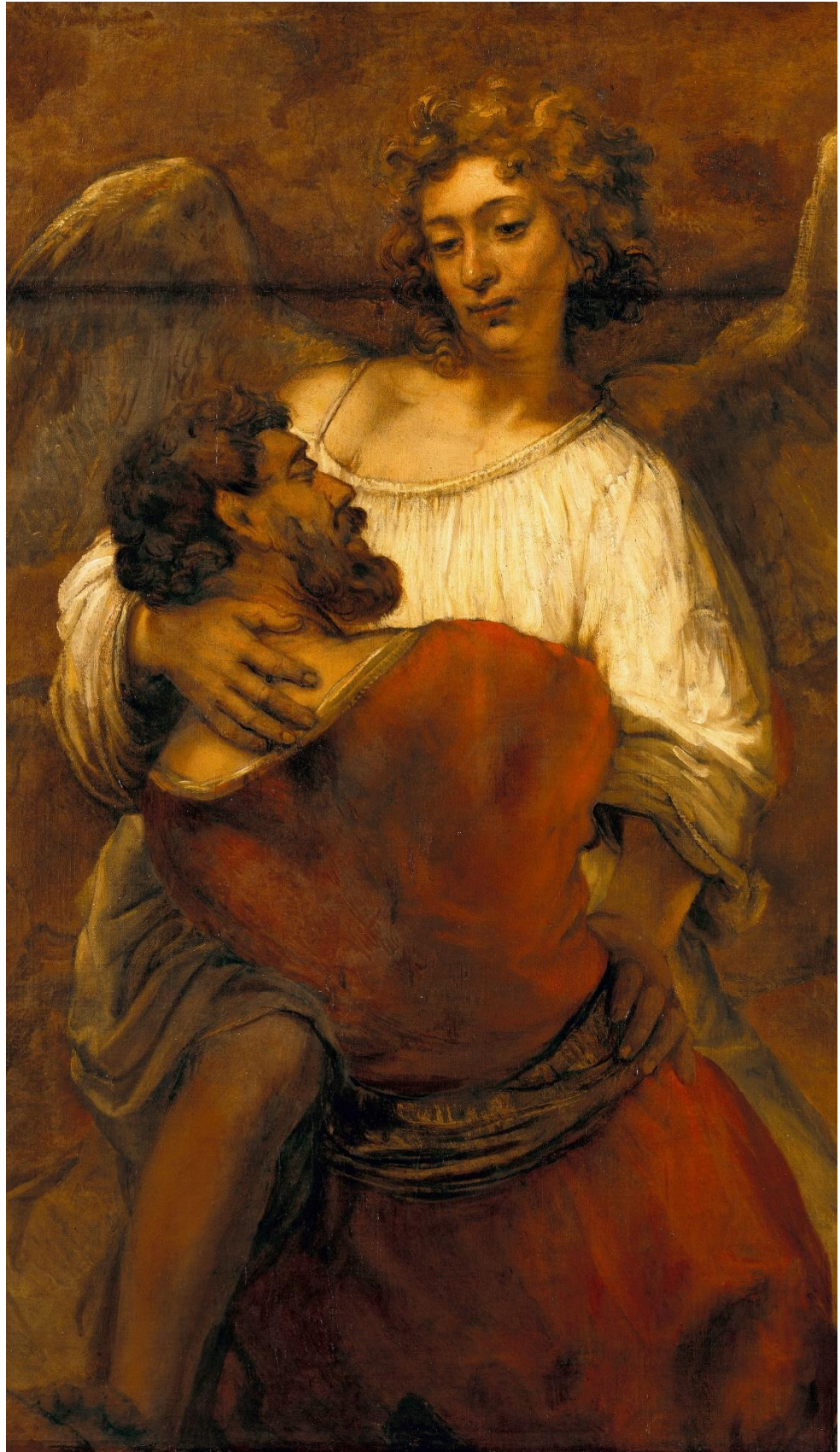




JESUS COLLEGE CHAPEL

LENT TERM 2019



Jacob Wrestling with the Angel (detail)
Rembrandt (1606–69)

REGULAR SERVICES (15th January–15th March)

Monday–Friday 9.15am Morning Prayer (said)

Tuesday 6.30pm Choral Evensong (College Choir)

Thursday 6.30pm Choral Evensong (Chapel Choir)

Saturday 6.30pm Choral Evensong (Chapel Choir)

Sunday 10.00am Eucharist (Vocal Consort) followed by breakfast in D1

6.00pm Choral Evensong (College Choir) followed by drinks

SPECIAL SERVICES

- January 13th **First Sunday Evensong of Term**, followed by hot supper in Hall (6.00pm)
- 22nd **Compline by candlelight**, followed by port & cocoa in D1 (9.45pm)
- 31st **Joint Evensong with Tiffin Boys' Choir** (6.30pm)
- February 2nd **Choral Evensong with Admission & Dismissal of Choristers** (6.30pm)
- 8th **Choral Evensong for St Radegund** (6.15pm)
- 19th **Compline by candlelight**, followed by port & cocoa in D1 (9.45pm)
- 21st **Ecumenical Taizé Service**, followed by informal hot supper (6.30pm)
- March 2nd **Joint Evensong with the Choir of the Royal School, Haslemere** (6.30pm)
- 3rd **Evensong as part of the Cambridge Female Composers Festival** (6.00pm)
- 5th **Choral Evensong for Shrove Tuesday**, followed by pancakes (6.30pm)
- 6th **Choral Eucharist for Ash Wednesday**, joint with the Pembroke College Girls' Choir (6.15pm)
- 10th **Lessons and Music for Lent & Passiontide** (6.00pm)
- 15th **Commemoration of Benefactors** (6.15pm)

EVENSONG ADDRESSES: ‘ENGAGING CHRISTIANITY’

- January 13th **On prayer**
Professor Sarah Coakley, Murray Edwards College, Faculty of Divinity
- 20th **On thinking faith**
The Dean of Chapel
- 27th **On being unapologetic**
The Rev’d Dr Paul Weston, Ridley Hall
- February 3rd **On faith in the public sphere**
The Rev’d Prebendary Rose Hudson-Wilkin, Priest-in-Charge of St Mary-at-Hill
- 10th **On science**
Dr Ruth Bancewicz, The Faraday Institute for Science and Religion
- 17th **On art**
The Rev’d Helen Orr, Michaelhouse
- 24th **On the common good**
Dr Amy Doughton, The Margaret Beaufort Institute of Theology
- March 3rd **On understanding yourself**
The Rev’d Dr Jason Byassee, Vancouver School of Theology

CIVIC ENGAGEMENT OPPORTUNITIES

The Salmon Youth Centre

Work as a volunteer this summer with other college members at one of the UK’s largest youth centres, located in Bermondsey, London; contact the Dean for more details.

Lyn’s House, Cambridge

Lyn’s House is a community providing hospitality and building friendships with people who have learning disabilities in and around Cambridge. If you are interested in learning more and would like to get involved, contact the Dean for further information.

EVENTS FOR COLLEGE MEMBERS

College Getaway to Windsor and Oxford (February 9th)

Take a break and getaway for free to two historic gems. Places are limited; contact the Dean for details.

Afternoon tea for graduate families (February 16th, 4.00pm–5.00pm)

All graduates and their partners and families are invited to tea in D1.

Big Questions in the Bar (Thursdays from 24th January, 8.00pm in the Roost)

Join the Assistant Chaplain Jennifer for a relaxed discussion group that will explore questions of meaning, purpose, ethics, and religion. All students are welcome.

THE CHAPEL

Jesus College Chapel has for nine centuries been a place of quiet and contemplation, and it is open to all members of the College community. The clergy are available to all members of the College – of any faith or none – as pastoral advisers; they can also offer information about other faith groups. Contact the Dean of Chapel if you are willing to read lessons, lead intercessions, or help in other ways with services in Chapel. Enquiries regarding the use of the Chapel may be directed to Amy Butterworth, Secretary to the Dean, at a.butterworth@jesus.cam.ac.uk.



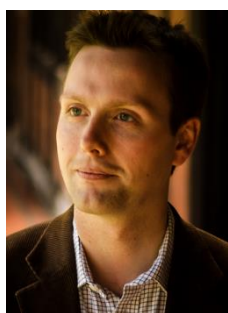
Paul Dominiak
Dean of Chapel
p.dominiak@jesus.cam.ac.uk



Jennifer Adams-Massmann
Assistant Chaplain
j.adams-massmann@jesus.cam.ac.uk

THE CHOIRS

Jesus College has a long and rich tradition of church music, and is distinctive in maintaining two choirs. Male undergraduates make up the ‘back row’ of each, singing with boy choristers in the Chapel Choir, and female students in the College Choir. Enquiries regarding the choirs may be directed to Alice Kane, Choir Administrator, at a.kane@jesus.cam.ac.uk. Alternatively you may wish to visit jesuscollegechoir.com



Richard Pinel
Director of Music
r.pinel@jesus.cam.ac.uk



[/jesuschoircambridge](https://www.facebook.com/jesuschoircambridge)



[@jescollchoir](https://twitter.com/jescollchoir)

CHAPEL CHARITIES

Chapel collections this term will go to support the work of **The Trussell Trust** and **Jimmy’s Night Shelter**. The Trussell Trust’s network of over 420 foodbanks operate out of more than 1,200 centres across the UK and provide a minimum of three days’ emergency food and support to people experiencing crisis. Jimmy’s provide help for the homeless in Cambridge, working with the local community, volunteers and partner agencies to deliver 24/7 emergency accommodation and supported housing for those who would otherwise be homeless or vulnerably housed.