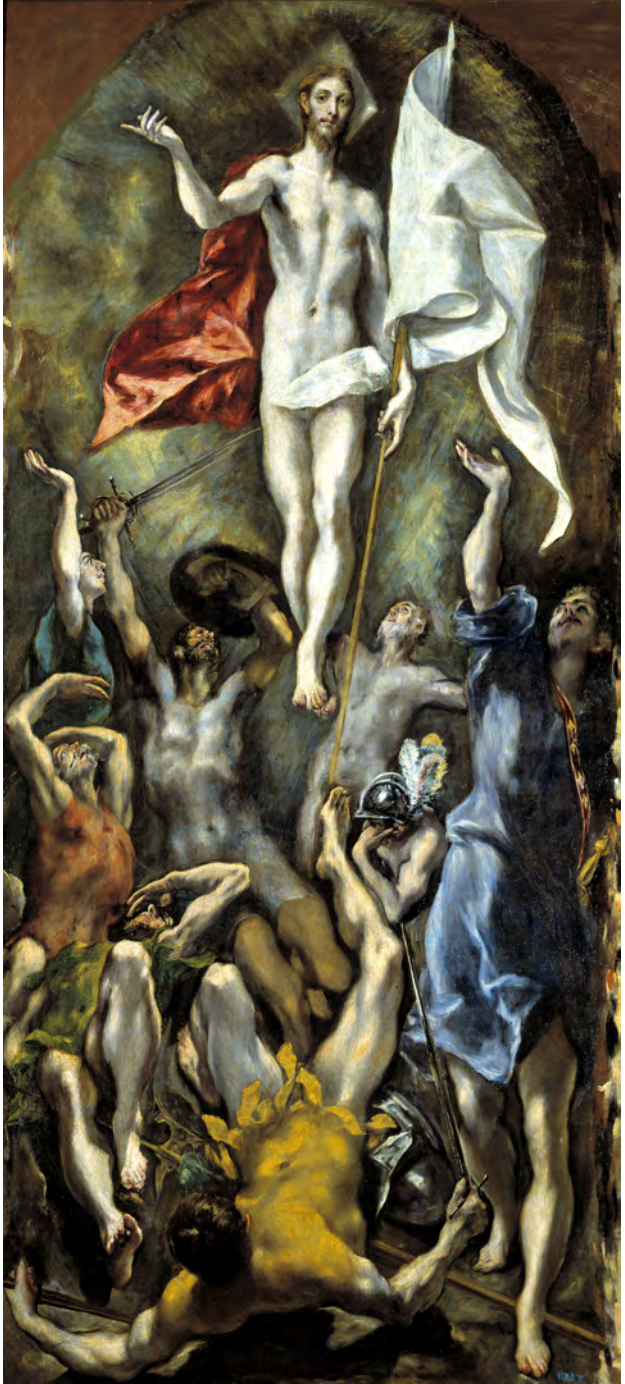




JESUS COLLEGE CHAPEL

EASTER TERM 2016



The Resurrection, El Greco, c. 1595

REGULAR SERVICES

Monday–Friday	8.30am Morning Prayer (said) 12pm Midday Prayer (said)
Tuesday	6.30pm Choral Evensong (College Choir)
Thursday	6.30pm Choral Evensong (Chapel Choir)
Saturday	6.30pm Choral Evensong (Chapel Choir)
Sunday	10am Choral Eucharist (Vocal Consort) followed by breakfast 6pm Choral Evensong (College Choir) followed by drinks

SUNDAY EVENSONG ADDRESSES: ‘PICTURING RESURRECTION’

17 th April	The Empty Tomb The Dean of Chapel <i>The Descent into Hell (Tintoretto); Black Square (Kazimir Malevich)</i>
24 th April	Peter Dr Sally Dormer, Lecturer, Victoria & Albert Museum <i>Maestà (Duccio); Christ Washing the Disciples' Feet (Otto III Gospels)</i>
1 st May	Mary Magdalene Dr Ayla Lepine, Westcott House <i>The Morning of the Resurrection (Burne-Jones); Nuptials of God (Gill)</i>
8 th May	The Ascension The Assistant Chaplain <i>Frames (Echakhch); Erased de Kooning Drawing (Rauschenberg)</i>
15 th May	The Holy Spirit (Pentecost) Ms Lucy Newman Cleeve, Founding Director of Man & Eve Projects <i>Here comes the Sony; Stations of the Resurrection (Mark Dean)</i>
22 nd May	Judas The Dean of Chapel <i>The Kiss of Judas (Giotto); The Taking of Christ (Caravaggio)</i>
29 th May	Thomas Dr Ruth Jackson, CRASSH <i>Incredulity of Thomas (Caravaggio); Moses and Thomas (Trier diptych)</i>
5 th June	Paul Dr Olivia Horsfall Turner, Curator of Designs, Victoria & Albert Museum <i>The Conversion of Saint Paul (Caravaggio); Untitled (William McKeown)</i>

SPECIAL SERVICES

Sunday 17 th April	Supper following first Evensong of term (6pm)
Saturday 30 th	Evensong with Admission & Dismissal of Choristers (6.30pm)
Tuesday 3 rd May	Compline (9.45pm) followed by drinks in D1
Thursday 5 th	Ascension Day Mattins, N Staircase (8.30am) followed by breakfast Ascension Day Choral Eucharist (6.30pm)
Saturday 21 st	Choral Eucharist with Confirmation by the Bishop of Ely (6pm)
Tuesday 24 th	Joint Evensong with St Mary's Saffron Walden Junior Choir (6.30pm)
Friday 27 th	Choral Evensong for Mr Rustar's Audit (6.15pm)
Tuesday 31 st	Choral Eucharist for the Visitation of the Blessed Virgin Mary (6.30pm)
Thursday 2 nd June	Service of Night Music followed by dinner in Upper Hall (6.15pm)
Tuesday 7 th	Compline (9.45pm) followed by drinks in D1
Tuesday 21 st	Choral Evensong for Graduands (6.15pm)
Saturday 25 th	Combined Choirs Choral Evensong for Donors to the College and Old Members Reunion (6pm)

OTHER EVENTS FOR COLLEGE MEMBERS

Tuesdays in Term	Come and See: Choral Evensong (6.30pm) <i>Enjoy a guided experience of Choral Evensong with elements of the service explained each week</i>
Saturdays in Term	Afternoon Tea (4pm) <i>Gather in D1 for a study break</i>
Saturday 23 rd April	Survive and Succeed in Exam Term (11am) <i>Over brunch in Hall, pick up helpful information</i>
Saturday 7 th May	College Getaway to St. Paul's Cathedral & the Tate Modern <i>Places are limited; contact the Dean for more details</i>
Tuesday 10 th May	Colouring Study Break in Chapel (9pm)

COLLEGE VOLUNTEERING AT THE SALMON YOUTH CENTRE

The Salmon Youth Centre in Bermondsey, London, is looking for volunteers willing to give one week during the Summer Vacation to help staff their youth activities. The Centre welcomes around 500 young people from vulnerable backgrounds every week, running six open access clubs and over twenty specialized clubs, including arts, sports, and training sessions. Contact the Dean for more details.

THE CHAPEL

Jesus College Chapel has for nine centuries been a place of quiet and contemplation, and it is open to all members of the College community. The clergy are available to all members of the College—of any faith or none—as pastoral advisors, as well as for information about other faith groups. The Chapel Clerks, Jennifer Fields (jf486), Timothy Gray (tdfg2) and Matthew Wise (mgw37) maintain the day-to-day operation of the Chapel services, working alongside the Chapel Secretaries. Contact the Chapel Clerks if you are willing to read lessons, lead intercessions, or to help in other ways with services in Chapel. Enquires regarding use of the Chapel may be directed to Emily Weissang, Secretary to the Dean (e.weissang@jesus.cam.ac.uk).



The Revd Paul Dominiak
Dean of Chapel
p.dominiak@jesus.cam.ac.uk



The Revd Devin McLachlan
Assistant Chaplain
d.mclachlan@jesus.cam.ac.uk

THE CHOIRS

Jesus College has a long and rich tradition of church music. It is distinctive in maintaining two choirs: the Chapel Choir is made up of boy choristers and adult male singers; and the College Choir, comprised of male and female student singers. Enquiries regarding the Choirs may be directed to Alice Kane, Choir Administrator (a.kane@jesus.cam.ac.uk) or visit www.jesuscollegechoir.com.



Mr Mark Williams
Director of Music
director-of-music@jesus.cam.ac.uk



/jesuschoircambridge



@jescollchoir

CHAPEL CHARITIES

Chapel collections this term will go to support the work of the **Cambridge City Foodbank** and **Campus Children's Holidays**. The Cambridge City Foodbank, run by volunteers, provides emergency non-perishable food parcels to people and families in crisis (cambridgecity.foodbank.org.uk). Campus Children's Holidays exists to provide respite from difficult home lives for children ages six to thirteen, and is run by volunteers from Cambridge University (campusholidays.org.uk).



For all the latest updates, find us on Facebook, at [/jesuscollegechapel](https://www.facebook.com/jesuscollegechapel)